



## Emergency Shower / Eyewash Shelter Modular Safety Shelter Systems

INTERTEC Instrumentation Limited is an industry leader with the manufacturing of FRP enclosures, cabinets, and modular Analyzer and Control System shelters. Using State of the art production, techniques and materials including 'UV' protective exterior surfaces and Class 1 ASTM E84 approved resins and insulation make the specification of INTERTEC shelters to house critical safety equipment designed to protect the work force, a natural fit.

Using the same quality standards that make INTERTEC the preferred supplier of protective shelters, allows us to offer a complete emergency shower/ eyewash station. The package includes an industry approved shower station, integrated alarms, and electrical equipment to meet your specific requirements for emergency and safety protection.

Optional packages are available to provide shelter heating systems, classified area electrical packages, and site-specific alarm functions.



## Product Specifications



### Standard Shelter sizes:

- 4'-4" x 8'-6" x 8'-0" ID height.
- 4'-4" x 4'-4" x 8'-0" ID height.
- Optional sizes are available.

### Standard Shelter Options:

- Safety Yellow exterior w/ "UV" protective block & reflective white interior.
- Standard Safety decals.
- Sloped floor to central drain area w/ removable FRP grate.
- Dual acting hinges w/ stainless steel handles.
- Viewing windows in door.

### Electrical & Alarm Package Options:

- Interior and exterior lighting.
- External alarm strobe light.
- External alarm audible horn.
- External electrical / alarm control CSA 4X / 94VO certified enclosure.
- Alarm relay contact switch at each shower operation.
- Shelter heating system (Electric or Fluid).
- Door entry alarm contacts.
- Internal Exhaust fan.

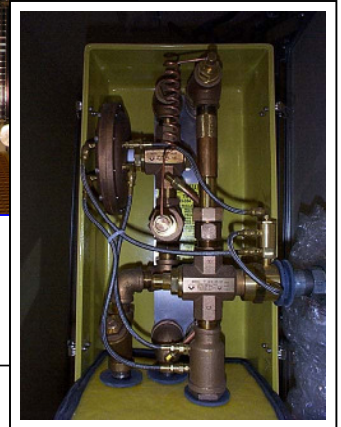
The above options are available for General Purpose locations or Class 1, Div. 1&2, Zone 1&2 environments.

Optional 3<sup>rd</sup> party electrical approval available.



**Optional System Packages**

- Water flow control valve.
- Water supply options.
- Scald protection.
- Maintenance access doors.
- Floor drain piped to external threaded connection.
- Optional colours and labeling available.



**Typical AutoCAD Drawing**

ALARM STROBE LIGHT (RED)  
 THERMON EXTERIOR ALARM/RESET 4X ENCLOSURE TYPE FF102  
 WATER & STEAM SUPPLY CONNECTION COUPLINGS  
 4'-9"  
 8'-0" INTERNAL HEIGHT  
 8'-7 1/2"  
 4'-4 1/2"  
 8'-11"  
 8'-8 1/2"  
 ALARM GRILL HORN  
 70W HPS EXTERIOR LIGHT  
 DOUBLE DOOR SHOWER ENTRANCE 6"x12" WINDOW OVER DOOR DRIP LIP  
 SAFETY SHOWER w/EYEWASH & DRENCH HOSE w/ALARM CONTACTS  
 DOOR CONTACT SWITCHES (TYP.2)  
 STEAM HEATER w/o TEMPERATURE CONTROLLER  
 TEMPERED WATER SUPPLY STATION WALL MOUNTED w/ DRAIN TO BASE  
 SLOPED BASE TO DRAIN AREA FRP GRATE COVERED  
 INTERNAL VAPOUR SEALED FLUORESCENT LIGHT FIXTURE

REV	DATE	DESCRIPTION OF REVISION	DRAWN	DESIGNED	ENGINEER	APPROVED
0	AUG 2008	STANDARD PRODUCTION ISSUE				

**SAFETY YELLOW UNPROTECTANT GEL COAT EXTERIOR WHITE INTERNAL HOT COAT ELECTRICAL CLASS AREA GENERAL PURPOSE**

THIS DRAWING IS THE PROPERTY OF INTERTEC INSTRUMENTATION LIMITED. IT IS CONFIDENTIAL AND MUST NOT BE MADE PUBLIC OR COPIED AND IS SUBJECT TO PATENT AND TRADE MARK RIGHTS OF INTERTEC INSTRUMENTATION. ALL RIGHTS RESERVED.

INTERTEC PROJECT NUMBER  
**MOD.SAFETY ASSEMBLY**

INTERTEC DWG. NO.  
**SHOWER ASSEMBLY**

SHT. 1 REV. 0

**INTERTEC**  
 INSTRUMENTATION, LTD.